

Heritage INSTRUMENTS®



echo  
ORTHOPAEDICS

# The Acetabular Cup Extraction System

Guidance for use



# The Acetabular Cup Extraction System



## Contents

Before and After Use	3
User Guide Assembly Steps	4
Set contents	6

Heritage<sup>®</sup> INSTRUMENTS<sup>®</sup>



# Before and after Use



## Instrument Care Checklist


**Before and after each use ensure that:**

- All instruments are examined for damage
- All working parts function correctly
- Parts missing or unfit for purpose to be replaced



**Important:** Ensure the integrity of each cutting blade by observing the blade contour against the size relevant silhouette markings.

## Cleaning:

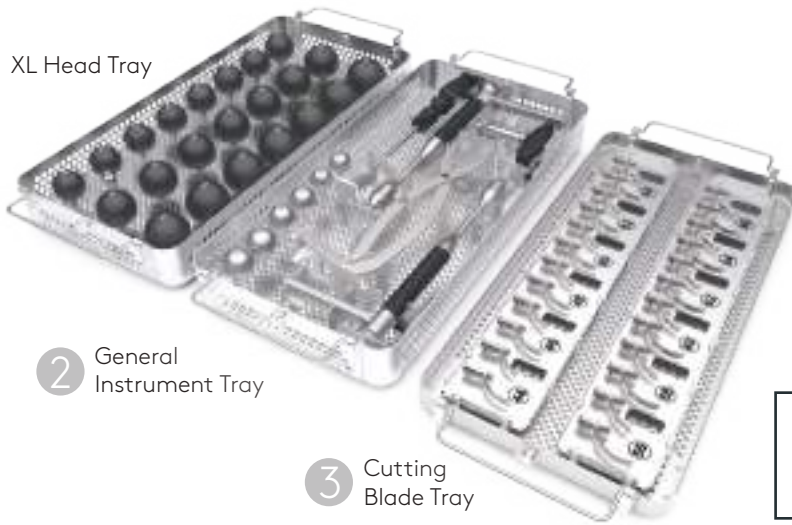
- Clean all internal and external threaded parts. Agitate with a soft brush if necessary.
- Check that all parts are free of bone debris.
-  Do not use wool or abrasive materials. Contact Echo Orthopaedics for full reprocessing instructions.



# The Acetabular Cup Extraction System

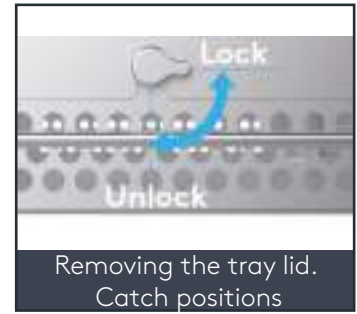
## STEP 1

1 XL Head Tray



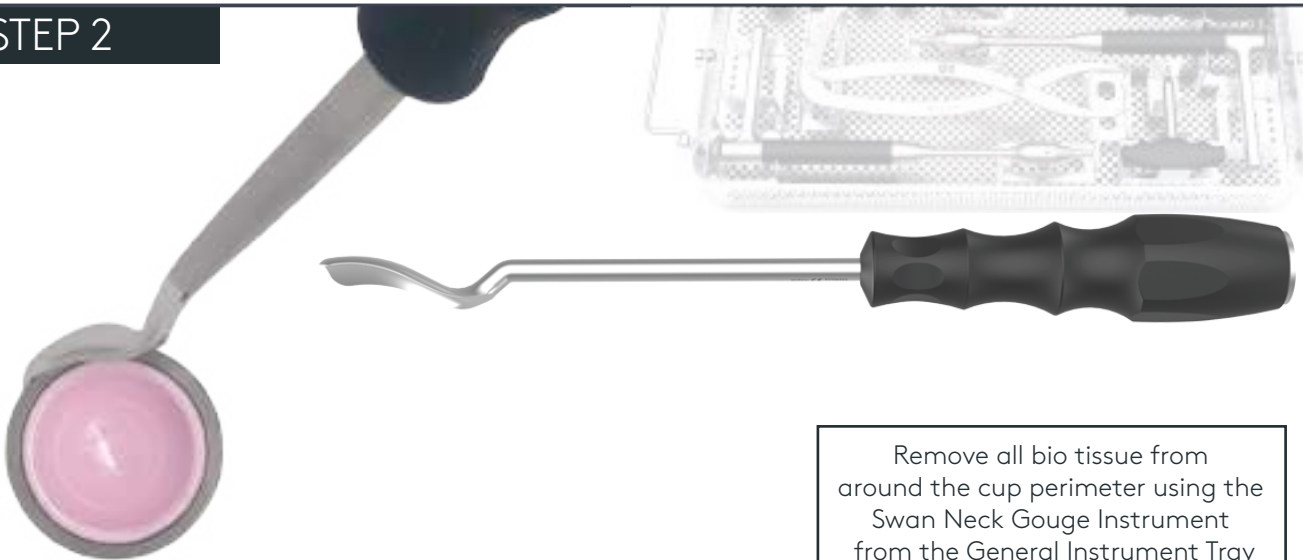
2 General Instrument Tray

3 Cutting Blade Tray



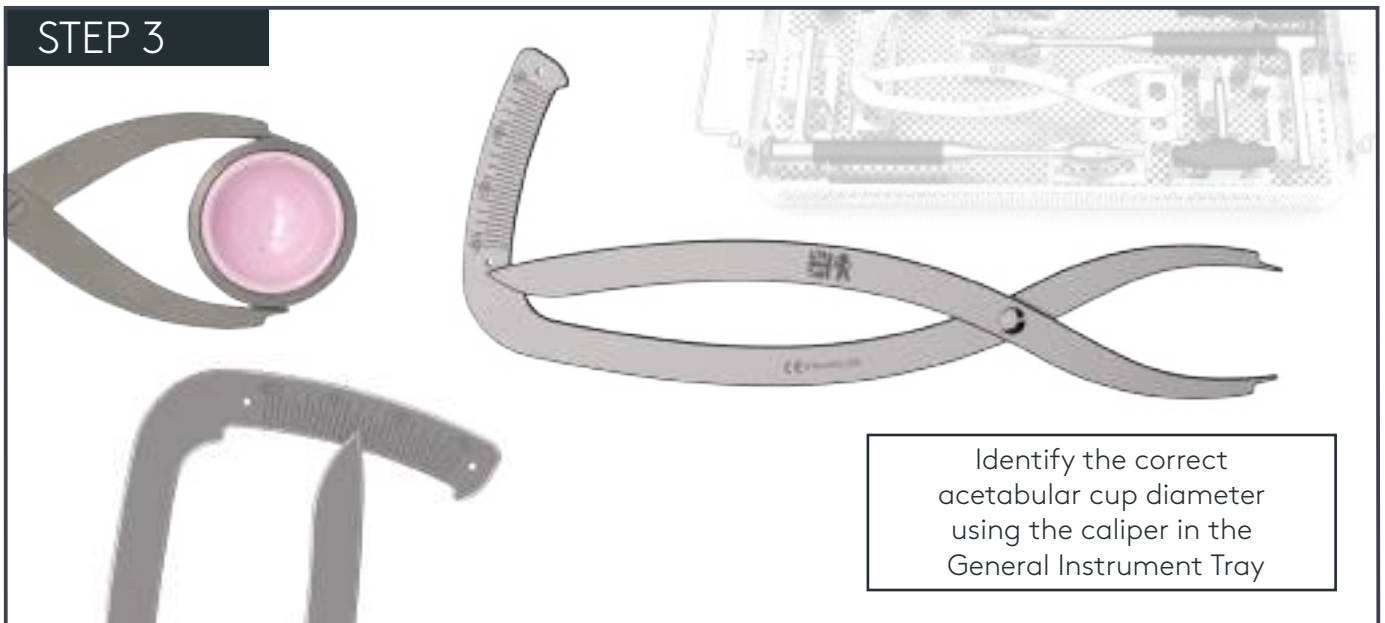
Inspect all three trays prior to use. Refer to the Instrument Care Checklist on page 3

## STEP 2



Remove all bio tissue from around the cup perimeter using the Swan Neck Gouge Instrument from the General Instrument Tray

## STEP 3



Identify the correct acetabular cup diameter using the caliper in the General Instrument Tray

# The Acetabular Cup Extraction System

## STEP 4A



4a-4b-5  
I need to remove grey  
background on the images

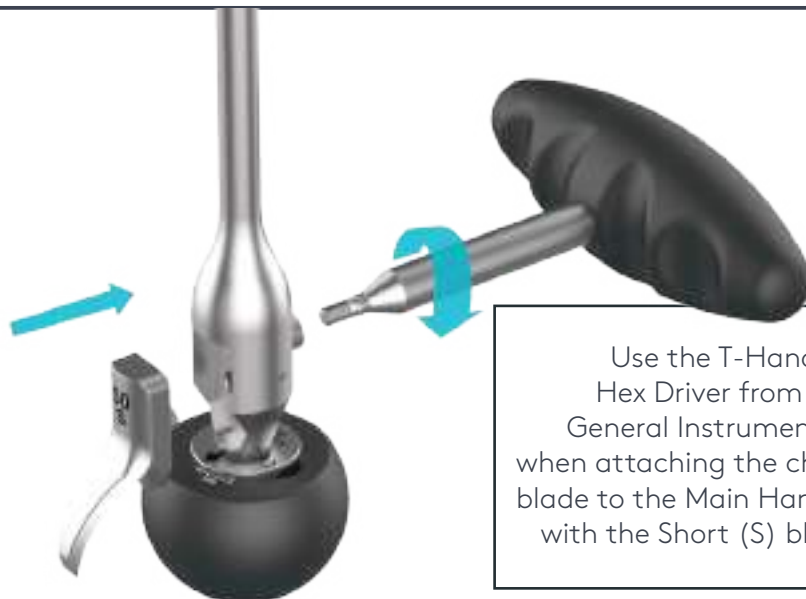
Select the correct size head.  
Remove the Main Handle  
from the General Instrument  
Tray. Assemble the chosen  
head onto the Main Handle  
by rotating the head clockwise  
over the threaded part  
of the shaft

## STEP 4B



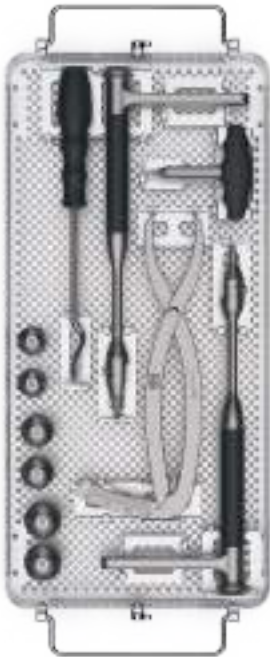

When using XL heads  
firstly screw on XL head  
adapter (CODE XXX)  
and then select the XL head  
size required and line up the  
arrow with the groove and  
rotate to secure head  
to adapter.  
  
To remove the head, line up  
the give with the arrow and  
pull away from the handle shaft.

## STEP 5



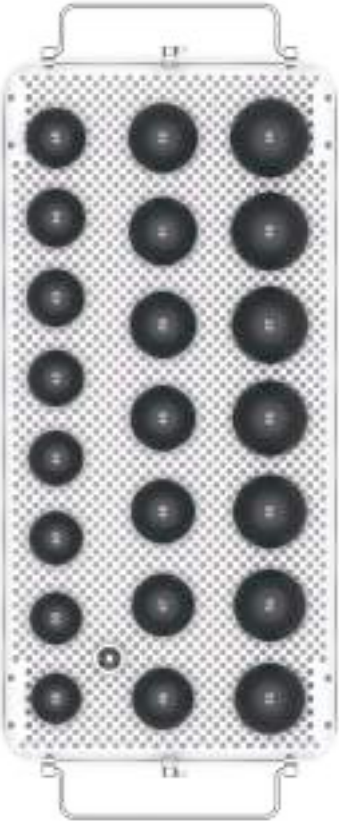
Use the T-Handle  
Hex Driver from the  
General Instrument Tray  
when attaching the chosen size  
blade to the Main Handle. Start  
with the Short (S) blade first

# Set Contents

Category	Code	Description
	<b>HTG-ACE-GI</b>	<b>Heritage A.C.E System General Instrument Tray</b>
	HTG-ACE-01	General Instrument Tray-Base
	HTG-ACE-02	General Instrument Tray-Lid
	HTG-ACE-201	Main Handle
	HTG-ACE-202	Hex T-Handle
	HTG-ACE-203	Swan Neck Gouge
	HTG-ACE-204	Measuring Caliper
	HTG-ACE-028	Head-28mm Diameter
	HTG-ACE-032	Head-32mm Diameter
	HTG-ACE-036	Head-36mm Diameter
Category	Code	Description
	<b>HTG-ACE-CB</b>	<b>Heritage A.C.E System Cutting Blades</b>
	HTG-ACE-03	Cutting Blade Tray-Base
	HTG-ACE-04	Cutting Blade Tray-Lid
	HTG-ACE-144	44mm Short Blade
	HTG-ACE-244	44mm Long Blade
	HTG-ACE-146	46mm Short Blade
	HTG-ACE-246	46mm Long Blade
	HTG-ACE-148	48mm Short Blade
	HTG-ACE-248	48mm Long Blade
	HTG-ACE-150	50mm Short Blade
	HTG-ACE-250	50mm Long Blade
	HTG-ACE-152	52mm Short Blade
	HTG-ACE-252	52mm Long Blade
	HTG-ACE-154	54mm Short Blade
	HTG-ACE-254	54mm Long Blade
	HTG-ACE-156	56mm Short Blade
	HTG-ACE-256	56mm Long Blade
	HTG-ACE-158	58mm Short Blade
	HTG-ACE-258	58mm Long Blade
	HTG-ACE-160	60mm Short Blade
	HTG-ACE-260	60mm Long Blade
	HTG-ACE-162	62mm Short Blade
	HTG-ACE-262	62mm Long Blade
	HTG-ACE-164	64mm Short Blade
	HTG-ACE-264	64mm Long Blade
	HTG-ACE-166	66mm Short Blade
	HTG-ACE-266	66mm Long Blade

\* Custom sizes available to order. Please enquire to Echo Orthopaedics Ltd

# Set Contents

Category	Code	Description
	<b>HTG-ACE-XL</b>	<b>Heritage A.C.E System XL Heads</b>
	HTG-ACE-05	XL Head Tray-Base
	HTG-ACE-04	XL Head Tray-Lid
	HTG-ACE-205	XL Head Adaptor
	HTG-ACE-038	XL Head 38mm
	HTG-ACE-039	XL Head 39mm
	HTG-ACE-040	XL Head 40mm
	HTG-ACE-041	XL Head 41mm
	HTG-ACE-042	XL Head 42mm
	HTG-ACE-043	XL Head 43mm
	HTG-ACE-044	XL Head 44mm
	HTG-ACE-045	XL Head 45mm
	HTG-ACE-046	XL Head 46mm
	HTG-ACE-047	XL Head 47mm
	HTG-ACE-048	XL Head 48mm
	HTG-ACE-049	XL Head 49mm
	HTG-ACE-050	XL Head 50mm
	HTG-ACE-051	XL Head 51mm
	HTG-ACE-052	XL Head 52mm
	HTG-ACE-053	XL Head 53mm
HTG-ACE-054	XL Head 54mm	
HTG-ACE-055	XL Head 55mm	
HTG-ACE-056	XL Head 56mm	
HTG-ACE-057	XL Head 57mm	
HTG-ACE-058	XL Head 58mm	
HTG-ACE-059	XL Head 59mm	

\* Custom sizes available to order. Please enquire to Echo Orthopaedics Ltd

Heritage INSTRUMENTS®



**Echo Orthopaedics Ltd**

Unit 4  
Highland Business Park London Road  
Bolney  
West Sussex  
RH17 5PX  
United Kingdom

**Tel: +44(0) 1444 882210**

[enquires@echo-ortho.co.uk](mailto:enquires@echo-ortho.co.uk)

Please note these "Guidelines for Use" refer to general situations and therefore individual surgeon judgement is required.



The medical products to which we assign the CE mark comply with the council Directive 93/42/EEC corresponding to their classification with the perspective conformity valuation process.